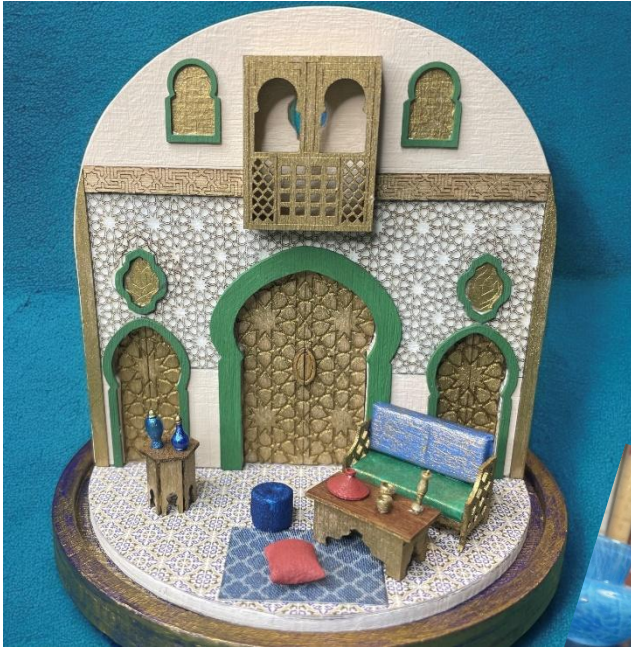




Pre-Convention Workshops



Monday Class



M1-Destination Morocco by Kari Crawford **Class Fee: \$169**

Our destination is the vibrant Kingdom of Morocco! Join me as we explore the colors, architecture, and customs that influence Moroccan design. This workshop features a 4 x 4 glass dome, etched walls, carved balcony, and intricate doors to display both inside and outside areas of a Riad of Fez. We will build the structure and wire the outdoor light before fully decorating both sides. The project includes tiled wallpapers for flooring with a fabric rug as well as a variety of maple furniture kits and 3D printed accessories we will assemble, paint, and upholster together. This was a classic MiniEtchers kit that I've now updated to be more authentic based on my observations while traveling in the region. The finished size is approximately: 4.5"L x 4.5"D x 4.5"H

Minimum Skill Level: Beginner

1/4" Scale



Pre-Convention Workshops



Monday Class



M2 – Art Nouveau Parlor Cabinet by Shannon Moore
Class Fee: \$132

The inspiration for this piece appeared in an 1897 Wards furniture catalog. The Art Nouveau style is a more Americanized version than its European counterpart. Even though this piece was billed as a parlor cabinet, because of its smaller size (2.5"W x 1.25"D x 4"H), it would fit in many settings as a display cabinet. The main section of this asymmetrical piece features a cabinet with working "glass" door, one "glass" side, along with a mirror atop. It's framed by flaired legs and a curved top pediment. Attached to the side are curved shelves that flow into another flaired leg. This piece is made from pre-cut cherry. Class time will be used to do final fitting of all the pieces, make the curved pediment, the door, and the layered "glass" side panel. The legs will be pre-cut but will require some final sanding and offer a choice to keep them square or slightly round the feet. 2.5"W (toe to toe) x 1.25"D x 4"H

Minimum Skill Level: Intermediate

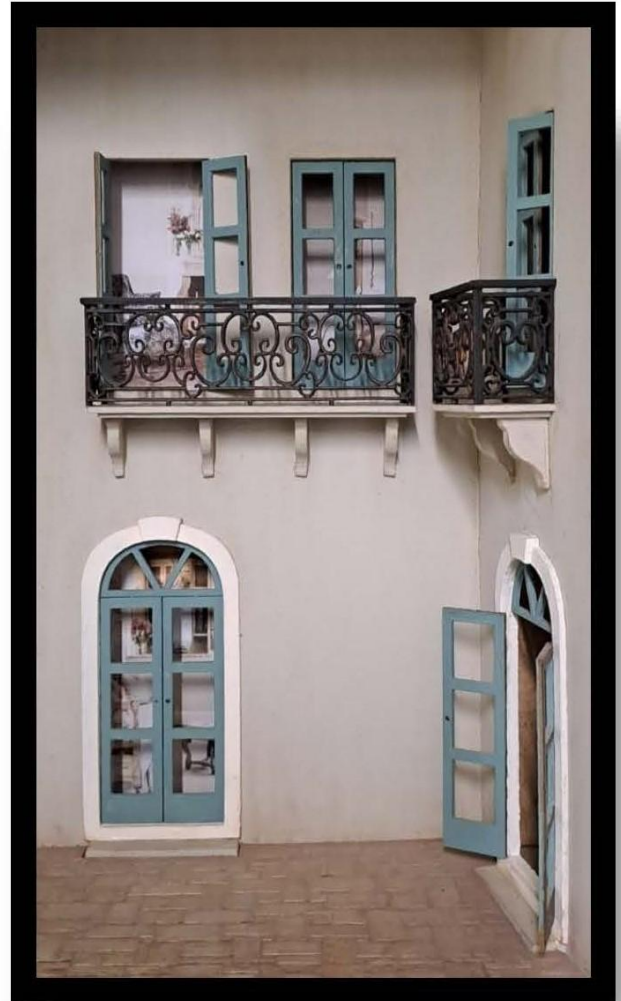
1" Scale



Pre-Convention Workshops



Monday Class



M3 – Boxed-Frame Façade by Belinda McWilliams *Class Fee: \$167*

Create a back-lit box-framed facade using a wide combination of materials. Learn easy landscaping techniques perfect for non-gardeners and simple aging and weathering techniques. The project uses back lighting and recessed scenes for creating depth and perspective in projects. 80 x 200 x 350 mm

Minimum Skill Level: Beginner

1” Scale



Pre-Convention Workshops

Monday Class



M4 –Bakers Rack with Bread and Pastries Using Air-Dry Clay
by Sue Ann Ketchum
Class Fee: \$167

Fill this pre-assembled and painted laser-cut bakers rack (student choice of black, hunter green, or burgundy) with bagels, donuts, turnovers, buns, rolls, eclairs, cannoli, cream horns, Napoleons, breads, pie and cake made from Model Magic, an air-dry clay. Metal platters and trays are included. Great class for those who find Polymer clay difficult to work with. 6" wide x 1 1/2" deep, x 7" high.

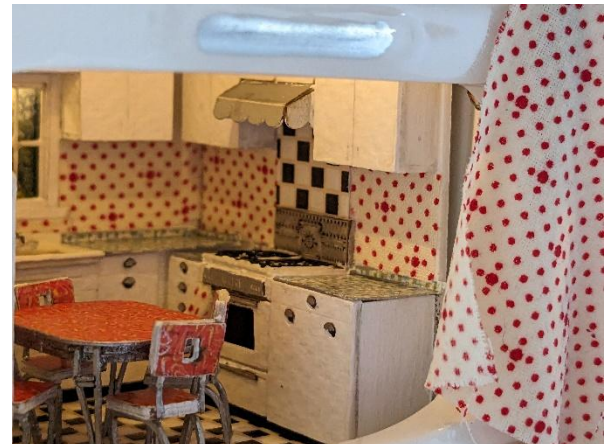
Minimum Skill Level: Intermediate

1" Scale



Pre-Convention Workshops

Tuesday Class



T1-Vintage Kitchen in a Scrubbie Holder by Claudia Crissey-Baum ***Class Fee: \$192***

Come hang out in the heart of the home! In this fun class students will build a quarter-inch vintage kitchen scene to go inside an adorable kitchen range-shaped scrubbie holder. They will add two LED lights, appliances, cabinets, flooring, and a reproduction of a 1950s dinette set. 4L x 4W x 6H

Minimum Skill Level: Intermediate

1/4" Scale



Pre-Convention Workshops



Tuesday Class



T2- 4-Tier Wedding Cake by Carolyn McVicker
Class Fee: \$102

The student will make a 4-tier wedding cake and will decorate it with doves, roses, and decorative piping. 3" x 3'

Minimum Skill Level: Beginner

1" Scale



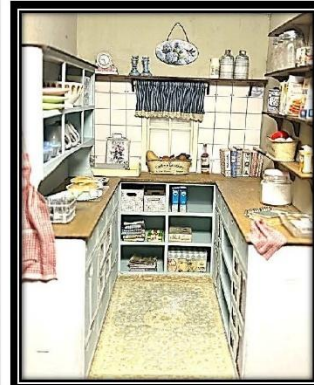
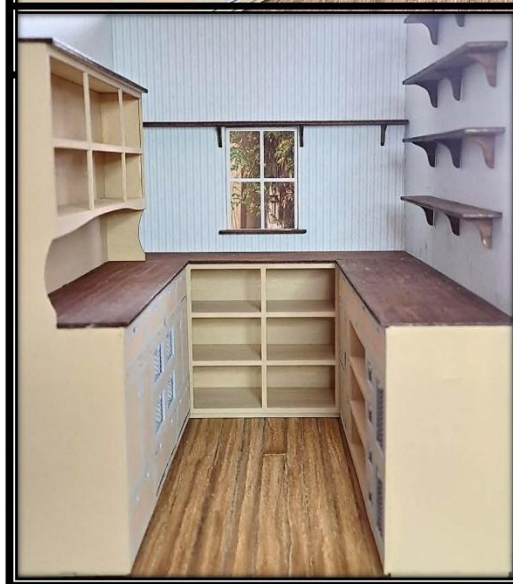
Pre-Convention Workshops



Tuesday Class



Displayed open above
and closed on left



***The Pantry only is included in this workshop. Accessories in this image are NOT included! Accessories are made in Wednesday's "Dress Your Pantry" workshop.**

T3-A Perfect Pantry by Belinda McWilliams **Class Fee: \$167**

Who doesn't love the look of a nostalgic pantry! We will be making a 1" scale pantry with purpose built cabinetry, open shelving and hinged side walls. The completed pantry could be inserted into a house or by opening the hinged side walls, it could be displayed on a bookshelf or under a cloche. Constructed from a combination of materials and finished with concealed lighting. Stock your pantry with the treasures made in the "Dress your pantry" workshop on Wednesday. 190 x 150 x 200 mm

Minimum Skill Level: Beginner

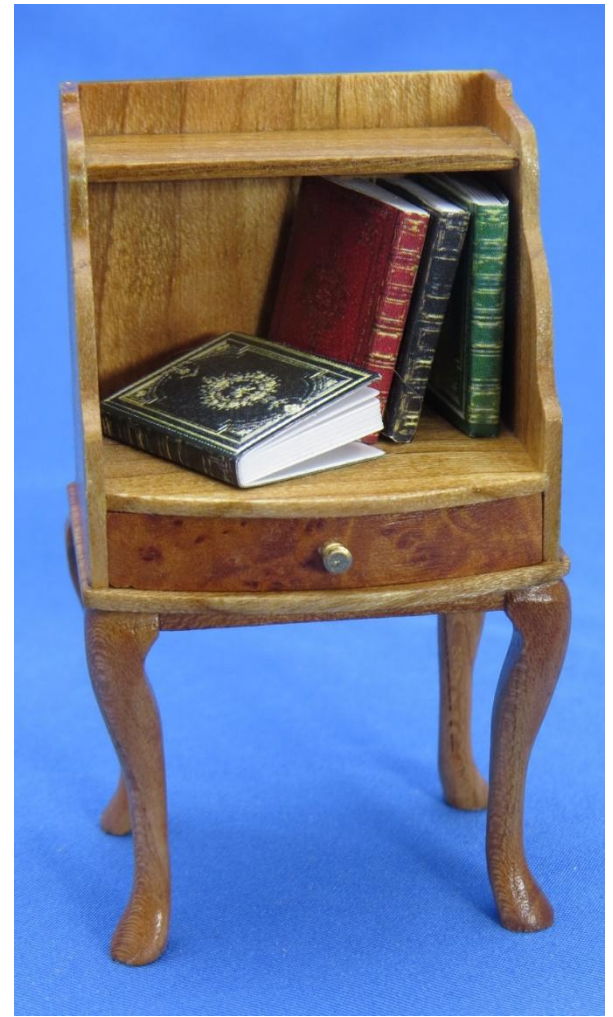
1" Scale



Pre-Convention Workshops



Tuesday Class



T4-Georgian Book Table by Shannon Moore

Class Fee: \$107

This Georgian book table features a "cubby" with shaped sides atop a curved-front drawer. At the top of the "cubby" is a small shelf while on the bottom are four cabriole legs. The piece is made from cherry except for the curved drawer front which is maple burl. The students will finish shaping and final sanding all the pre-cut parts including the 4 cabriole legs, which will begin as pin-routed leg blanks. 4 assorted blank books will be included to add to the scene. The piece is approximately 1-3/4" W x 1-3/8" D x 3" H.

Minimum Skill Level: Intermediate

1" Scale



Pre-Convention Workshops



Tuesday Class



T5- 1:48 Aspen Grove Tiny House by Ruth Stewart

Class Fee: \$157

Welcome to our brand new tiny house called Aspen Grove. This cute house is full of beautiful windows so you can sit and watch nature outside from the comfort of your tiny home. Come and join me for a day of fun learning how to paint aspen wood and assemble this adorable house. You will get precut aspen textured papers for the outside and carpet for the inside. This class comes with 2 mushroom sconces, one for the front door and one for the tiny bathroom under the stairs. A toilet, sink and mirror for the bathroom is also included, since it has to be installed before the house is finished. You will also get a mushroom light and fan for the living room with the LEDs and battery pack for all the lights. The base to sit the house on will allow you to do landscaping later. The kitchen/living room swings open so you can see the interior. The photo shows the base and the tiny house. Landscaping/exterior kit and interior kits will be available in the sales room. Base is 7 1/2" 11"— House is 6" long by 4 1/2."

Minimum Skill Level: Beginner

1/4" Scale



Pre-Convention Workshops



Wednesday Class



***Accessories only are included in this workshop. The pantry pictured is NOT included! The pantry is made in Tuesday's "Perfect Pantry" workshop.**

W1-Dress Your Pantry by Belinda McWilliams

Class Fee: \$72

Create the look of a nostalgic pantry with this collection of accessories! Constructed from a wide combination of materials and finished as a new or pre-loved. Learn about water slide decals and many tips and tricks using glues. Stock your pantry or fill your kitchen with all these treasures. The pantry is made in Tuesday's "Perfect Pantry" workshop. Items vary in size and are all 1" scale.

Minimum Skill Level: Beginner

1" Scale



Pre-Convention Workshops

Wednesday Class



W2-The Buttercup Cottage by Preble & Gene McDaniel Class Fee: \$77

The class involves several painting techniques, staining, assembly of laser cut kit, using sticker style pre-cut wallpaper, and landscaping. The Buttercup Cottage is inspired by artwork on a gift bag. This is a laser cut updated version of what Preble created in miniature over twenty years ago. 6L x 6w x 5h

Minimum Skill Level: Beginner

1/4" Scale



Pre-Convention Workshops



Wednesday Class



W3-A Tiny Dwelling by Jenny Yates
Class Fee: \$72

This tiny dwelling will take a tiny amount of time to build for your tiny house guests! It is pretty easy and should be close to being finished by the end of the class. Everything is included unless you would like to bring your own paint color and/or wallpaper. Your tiny dwelling can be displayed with or without the table base. Basic toolbox is needed, paintbrushes, tacky glue and a squaring jig.

Minimum Skill Level: Beginner

1/144th" Scale



Pre-Convention Workshops



Wednesday Class



W4-Abeille House by Sherry Taylor *Class Fee: \$275*

Join the enchantment of creating the perfect afternoon setting. Abeille house is a light and airy conservatory with an elegant charm. We will be building and finishing the cottage and all of its interior decor including 2 chairs, table with a tray, side table, flowerpot, candelabra, window frame and a storage box with flowers. The fireplace is part of the structure. I will be supplying everything you need to build and finish the project. This is an all-day event. 8L x 8W x 11.8H.

Minimum Skill Level: Beginner

1" Scale



Pre-Convention Workshops

Wednesday Class



W5- Quarter Scale French Salon by Barbara Wilson *Class Fee: \$152*

Elegant French Salon in quarter scale. Students will be assembling scrumptious puddling drapes on the two back lit windows. They will be assembling a French sofa that is my own design, upholstering two French chairs, wallpapering in an elegant paneled wallpaper and assembling wall sconces with LED battery operated nano lights. They will wire this into a switch which is located on the bottom of the box. Completion of the project is iffy, but you will be far enough along that you can finish at home. And you will be given some surprises throughout class time. A basic tool kit and Ottlite (if you need extra lighting for working) will be necessary. 2-1/2"L x 2-1/2"W x 3"H

Minimum Skill Level: Beginner

1/4" Scale



Pre-Convention Workshops



Wednesday Class



****Stuffing toys pictured are NOT included!**

W6-Petit Point Miniature Christmas Stockings by Natalie Frank *Class Fee: \$92*

If you ever wondered what it takes to design and petit point a miniature, this class is for you. This class is a hands-on introductory class for beginners. Students will learn how to frame silk gauze, what silk floss and needles to use for different counts of silk gauze, appropriate stitches, blocking, finishing. You will receive 6 patterns along with all supplies and needles needed to finish and create more at home. 1-1/4" x 1-1/4"

Minimum Skill Level: Beginner

1" Scale



Pre-Convention Workshops



Wednesday Class



W7-Micro Scale Advent Calendar by Claudia Crissey-Baum ***Class Fee: \$217***

Advent calendars are all the rage today! Miniaturists have been swept into this trend too—who wouldn't be excited with the idea of opening up something new every day while waiting for Christmas? Today's calendars vary hugely, containing anything from chocolates and small toys, to fragrances and designer shoes! Several well-known miniature designers have jumped on this fun bandwagon too, offering hugely popular limited-time-only calendars in their shops. In this class students will build a 1:144 scale house based on a vintage Bliss dollhouse, and will go home with 24 little kits to use as their own Advent calendar. No peeking! Except maybe just a little...

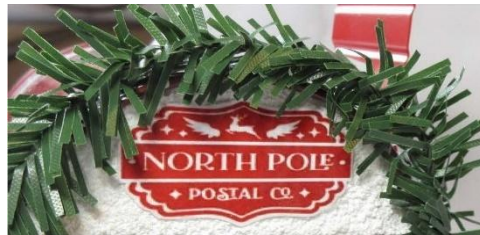
Minimum Skill Level: Beginner

1/144" Scale



Pre-Convention Workshops

2 Day Workshop: Monday & Tuesday Class



MT1-Letters to Santa by Cheryl Hubbard

Class Fee: \$215

We will be assembling furniture kits and learning my technique for upholstering the cushions. There will be painting tips and paints that I often use for painting 3D printed pieces. The room box itself and the fireplace will be made from scratch, and we will install electrical as the roombox has a crystal light fixture and has light embers in the fireplace. You will make many, many letters to Santa :) that I will send to you so you can make them ahead of time. Naturally, we will be decorating Christmas trees as well. The roombox will be completed on Monday. For those who are not able to join us on Tuesday you will have no problem completing the landscaping at home. Cheryl's contact information will be on the instruction sheet if you have questions.

Minimum Skill Level: Intermediate

1/4" Scale



Pre-Convention Workshops



2 Day Workshop: Monday & Tuesday Class



***Furniture in pictures are NOT included in workshop!**

MT2- 1/4" Scale Tiny Tailor Shop by Carl Bronsdon ***Class Fee: \$202***

A 1/4 scale version of the larger Trim Tailor shop (taught in Franklin 2024) designed with detailing in mind, this tiny shop, (designed as a tailor shop but could be made into a variety of other shops) is chock full of detailing. From the faux stone façade to its oval window and "copper and glass" skylight roof, and wrought iron railings, it exudes charm from a century ago. Learn tips and tricks of using paper, paint and wood trims to create the looks of stone and tooled copper detailing while completing this tiny delight of a shop. 2L x 3W x 2H

Minimum Skill Level: Intermediate

1/4" Scale



Pre-Convention Workshops



2 Day Workshop: Tuesday & Wednesday Class



TW1- Summer at the Lighthouse by Linda Farris ***Class Fee: \$212***

Jonah (doll by Julie Stevens) will be spending the summer at his Granddad's lighthouse. He is so excited to sail his little boat in the sea as he watches the big boats come and go along the shore. Build, light and furnish the house with a bedroom for Jonah (wallpaper and make him a bed, table & lamp) finish with artwork and a rug. Also wallpaper a cozy living room with a fireplace, a mini lighthouse on mantle, comfy chair, bookcase, art, plant and rug. The background scene has been printed by me for you to glue in place, unless you have a 6x6 picture you would rather use (if so bring 2 copies). We will then create a rocky cliff with log steps to the sea and a sandy watery shore with lots of shells, starfish and lichen. Paint a pelican to come land on nearby logs. Just in case Jonah's boat drifts a little too far out and needs a rescue a friendly mermaid (made by me) is waiting to slide in and lend a hand. Most of the scene will fit under a 6" acrylic cube (provided), but 2-1/2" of top lighthouse will rest on top of cube and be removable as well as cube. The finished scene with cube will fit in a 8" box, which will be provided. 8-1/2", but 2-1/2" is removable so it fits in 8" box.

Minimum Skill Level: Beginner

1/4" Scale